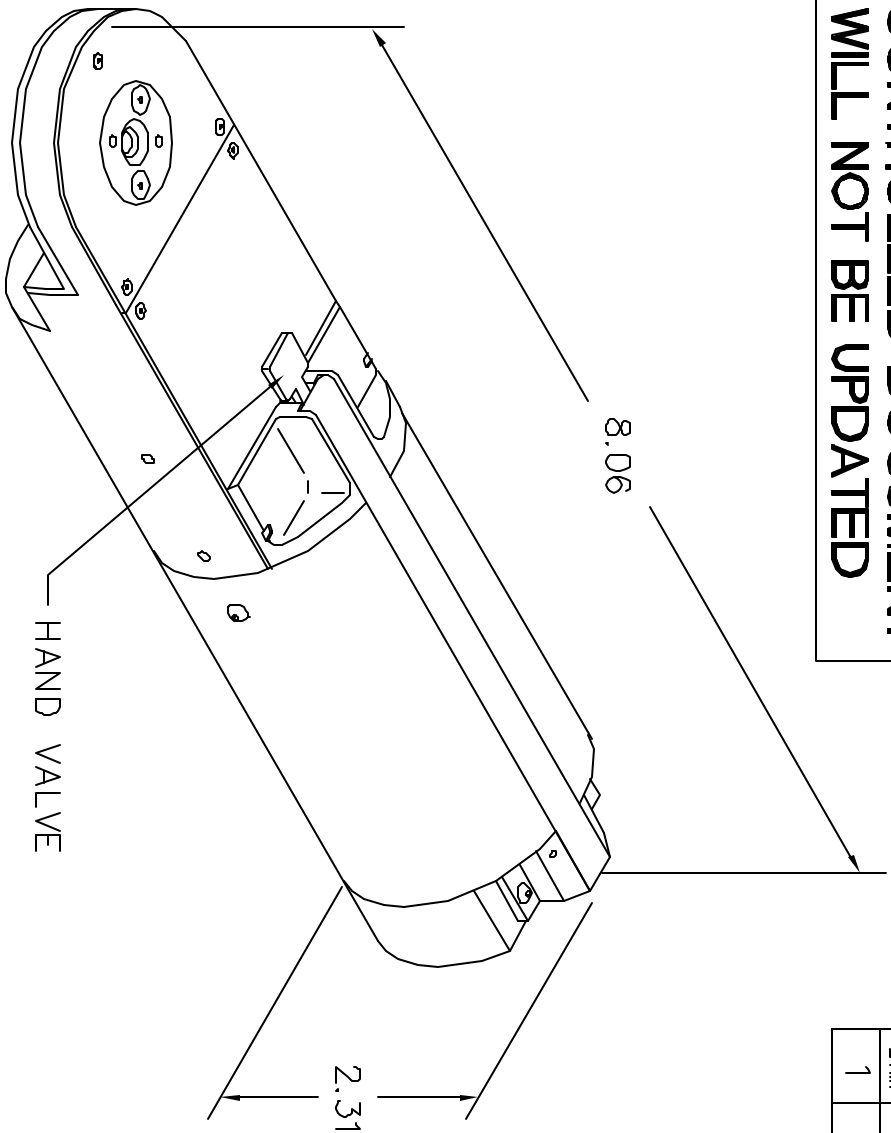


**UNCONTROLLED DOCUMENT
WILL NOT BE UPDATED**



REVISIONS			
REV. SYM.	E.C.O. NUMBER	DESCRIPTION	DATE
1		ORIGINAL RELEASE	1-12-00

GAGING LIMITS OF INDENTERS			
SEL NO	INSPECTION GAGE		APP'D DATE
	Ø GO ± .0001	Ø NO-GO ± .0001	
1	.0160	.0210	
2	.0190	.0240	
3	.0220	.0270	
4	.0250	.0300	
5	.0290	.0340	
6	.0330	.0380	
7	.0370	.0420	
8	.0410	.0460	

USE GAGE P/N G145
AT SELECTOR SETTING 8

RESTRICTED & CONFIDENTIAL
 CONFIDENTIAL PROPERTY OF DANIELS MANUFACTURING CORP. NOT TO BE DISCLOSED TO OTHERS, REPRODUCED OR USED FOR ANY OTHER PURPOSE, EXCEPT AS AUTHORIZED IN WRITING BY DANIELS MANUFACTURING. MUST BE RETURNED TO DANIELS MANUFACTURING CORP. ON COMPLETION OF ORDER OR OTHER PURPOSE FOR WHICH LENT.

DO NOT SCALE DRAWING

DRN. A. MOO-YOUNG	DATE 1-12-00
CHK'D. RRR	DATE 1-12-00
APP'D.	DATE
APP'D.	DATE

NOTE: THIS DRAWING IS AN OUTLINE DRAWING OF THE RESPECTIVE DMG. PART NUMBER INDICATED. ACTUAL DMG PART NUMBER IS DRAWING NUMBER WITHOUT THE "ENV" SUFFIX.

DMG
 DANIELS MANUFACTURING CORP.
 ORLANDO, FLORIDA
 GAGE 11851

TITLE			
ENVELOPE DRAWING PNEUMATIC CRIMP TOOL			
WHERE USED:			
SIZE	SCALE	GAD P/N	SHEET OF
A	NTS	WA22P-ENV	1 OF 1
POSTING		DMG. NO. WA22P-ENV	REV. 1